

SM-PCP6 Plastic Cups Printing Machine

Printing Machine (Below is 6 color machine with 6 stations.)



Printing machine connect with packing machine (the cup lifting conveyor is customized according to cups material).

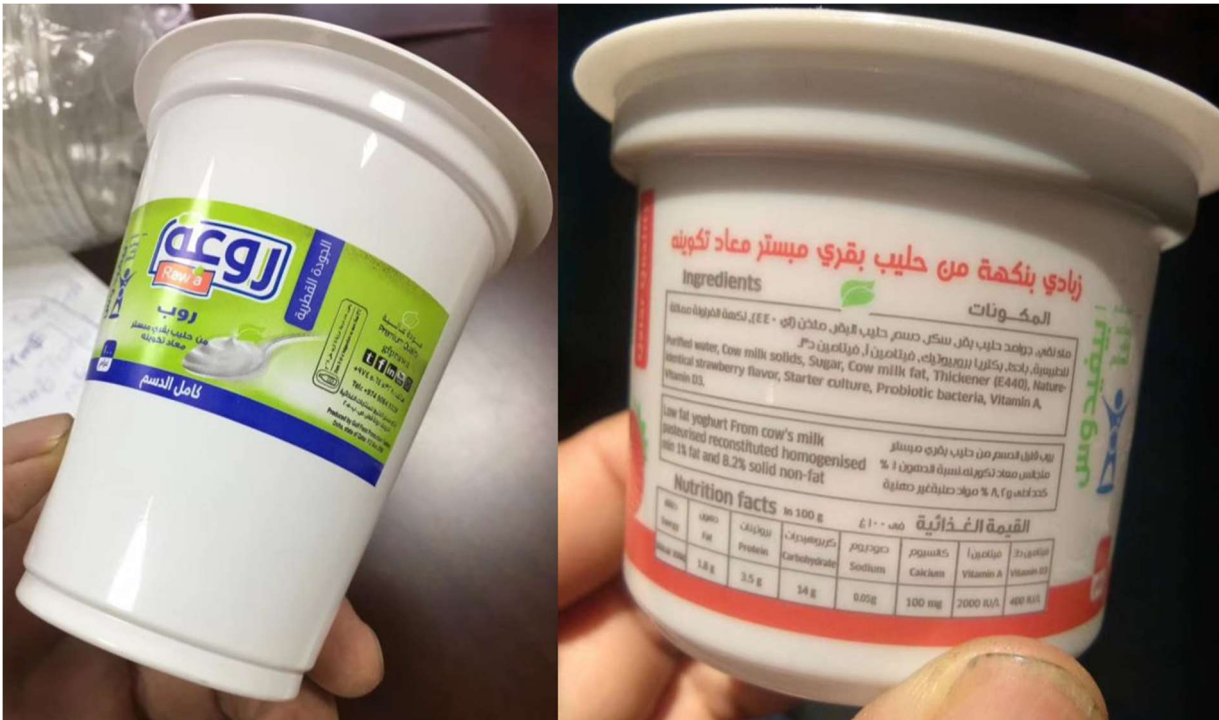


Application area:

The printing machine can print on paper cups and PET, PP, PLA cups. E.g. juice cup, milk-
tea cup, yogurt cup, ice-cream cup, fast-food bowl, Coca Cola cup and other cylindrical plastic
containers.

Printing Samples:





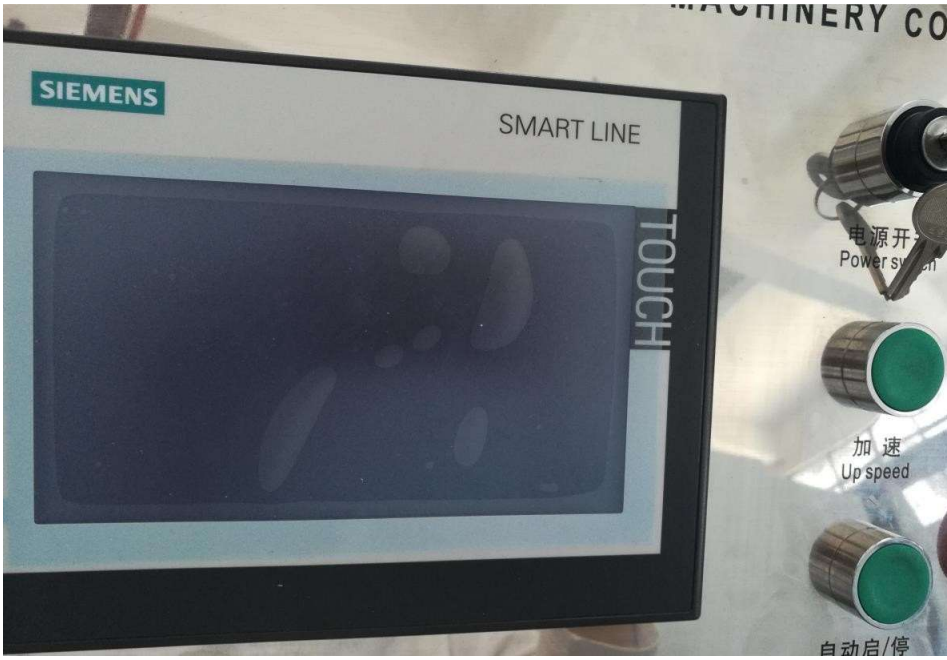
Main Feture:

- Upgraded vertical automatic cups feeding is special suitable for both paper cups and plastic cups.
- Cup dispenser can be easy adjustable and operated fluently
- Photoelectric sensor is special for detecting the splice of paper cup when printing different color design, and then rotate the cups to avoid printing on the splice position.
- Automatic sensor detecting: Printing rollers separate automatically when lack of cup or double cups
- The gap between roll gearbox can be automatic adjustable. It can ensure the perfect printing result.
- The printing plate has special puncher, which can be aligned accurately, quickly and operated easily.
- Replacement of mould core or diehead is convenient and fast
- Automatic detecting the fault cups by corona.
- Random inspection function no need stop machine.
- Automatic accurate counting and easy collecting printed cups.
- Automatic driver for transfer printing rubber type.

Technical Parameter:

Model	LD-CP6N
Max printing height	160mm
Max cup angle of tip	Any degree no problem.
Max printing speed	180-400 pcs/ min(depends on ink quality, full area, The paper cup work about 200pcs/min)
Cup top diameter	Dia.50--180 mm
Cup depth	30-180mm
Main motor power	20.0 kw
Power	AC 220V 50/60HZ, 3.8Kw
Overall Dimension	6500*2500*2550 mm
Machine weight	6.8T

Machine parts picture:



SIEMENS PLC&touch screen



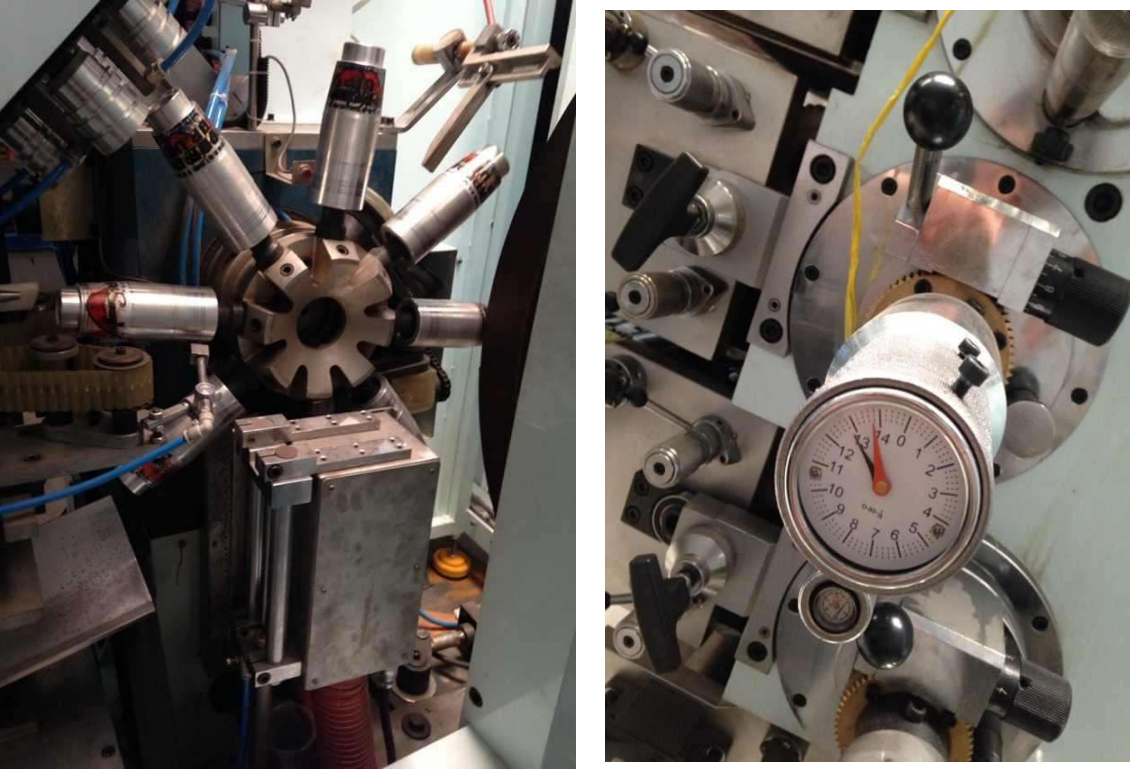
printing stations&ink container



Printing plate is controlled by separated motor



Motor drive systems



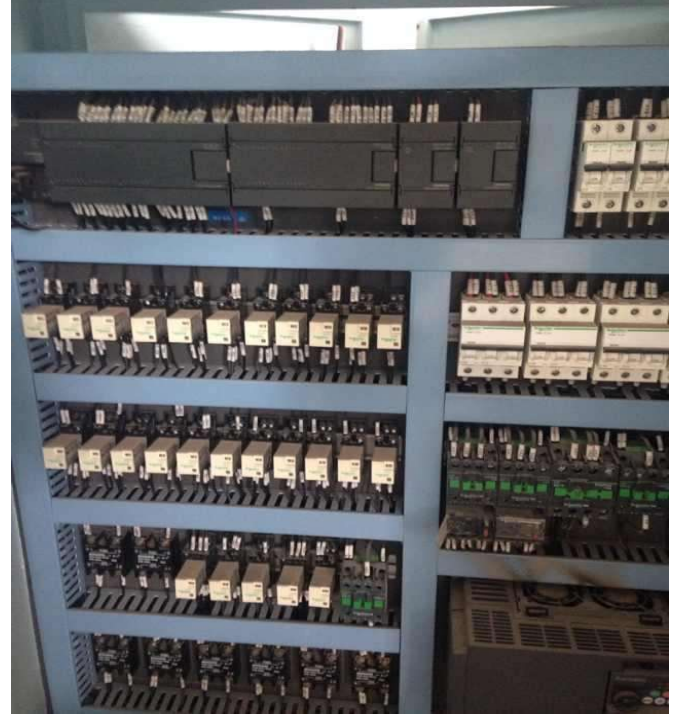
Cup mandrels



The host adapts variable frequency speed regulation, synchronous belt transmission with stable operation, low noise.

The feeding uniform ink system is open architecture with easy loading, adjustment and cleaning that part have 4 ink box.

Distribution box



Configuration List:

Name	Qty	Brand	Brand's Country
PLC	1	Siemens	Germany
Control Module	1	Siemens	Germany
Control Module	2	Siemens	Germany
Touch Screen	1	Siemens	Germany
Three phases Motor	1	Siemens(Bader)	Germany
Single phase motor	10	Dongli	China
Switching power supply	1	MW	Taiwan
Photoelectric switch	1	Omron	Japan
Photoelectric sensor	1	Omron	Japan
Proximity Switch	4	Turck	Germany
Frequency Converter	3	Schneider	France
Air Switch	16	Schneider	France
Mould Case Circuit breaker	1	Schneider	France
Intermediate Relay	27	Fotek	Taiwan
AC Contactor	6	Schneider	France
Thermal Overload relay	2	Schneider	France
Button	10	Schneider	France
Indicator Light	3	Schneider	Germany
Solenoid Valve	9	JinQi	Taiwan
Solenoid Valve	2	Mac	America
Air Cylinder	Some pcs	AirTac	Taiwan
Main Motor	1 set	Siemens (Bader)	Germany
Dividing Box	Some pcs	ShangDong	China
Synchronous Belt	Some pcs	Germang OPTI	Germany
Programmable	1	Siemens XT-60	Germany
Bearing	Some pcs	NTN/NSK	Japan,china

Spare part List

No.	NAME	Specification	Unit	QTY
1	Tool Box		PIC	1
2	Adjustable spanner	10"	PIC	1
3	Open spanner	6-7	PIC	1
4		8-10	PIC	1
5		12-14	PIC	1
6		17-19	PIC	1
7	Internal hexagonal wrench		SET	1
8	Inside spring pliers	Middle size	PIC	1
9	Outside spring pliers	Middle size	PIC	1
10	Art Knife		PIC	1
11	Straight screwdriver		PIC	1
12	Cross Screwdriver		PIC	1
13	Scissor		PIC	1
14	Vice		PIC	1
15	Feeler gauge		PIC	1
16	Grease gun		PIC	1
17	T type handle		PIC	1
18	Steel straight clasp hands	M6*20	PCS	2
19	Rubber blanket		PIC	1
20	Double sides adhesive tape		PIC	1
21	Pipe	6*4MM (3M)	PIC	1
22		8*4MM (2M)	PIC	1
23		12*4MM (2M)	PIC	1
24	Air pipe joint	ESL6-01	PCS	2
25		ZPC6-02	PCS	4
26		PL6-01	PCS	5
27		ZPC6-M5	PCS	4
28		ZPC8-01	PCS	2
29		GPL8-02	PCS	2
30		ESL8-02	PCS	2

31	Solid state Relay	SSR-10DD	PIC	1
32		SSR-25DA	PIC	1
33		SSR-75DA	PIC	1
34	Solenoid valve	DC24V	PIC	1
35	Plate puncher		SET	1
36	UV Light	3KW	PCS	2
37	Proximity switch		PIC	1
38	Ceramics joint		PIC	1
39	Rotate rubber wheel		PCS	8
40	Main motor belt	V type Belt B-1702	PIC	1
41	Gear box output synchronous belt	1800-8M-50	PIC	1
42	Cup in synchronous belt	270L12	PIC	1
43	synchronous belt	285L12	PIC	1
44	synchronous belt	450L12	PIC	1
45	synchronous belt	134XL12	PCS	2
46		164XL12	PCS	2
47	Cup out synchronous belt	450DL19	PIC	1
48	cup Out synchronous belt	Polyurethane /980-T10-40	PIC	1
49	Connet gearbox synchronous belt	275L12	PIC	1
50		220L20	PIC	1
51	UV Light rotate synchronous belt	270L25	PIC	1
52	Connet cup in motor synchronous belt	150L20	PIC	1

Contact Information



+90 552 442 33 07



info@suramachine.com



www.suramachine.com www.surapack.com

Dudullu OSB District, DES Sanayi Sitesi, 101. Sokak No 8/10, 34775 Ümraniye/İstanbul Turkey



Telefon: +90 216 415 66 55

+90 216 420 47 30

+90 850 305 47 30